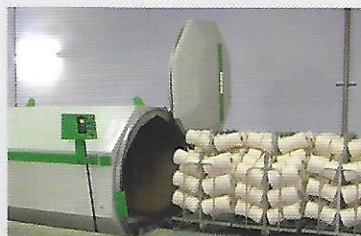
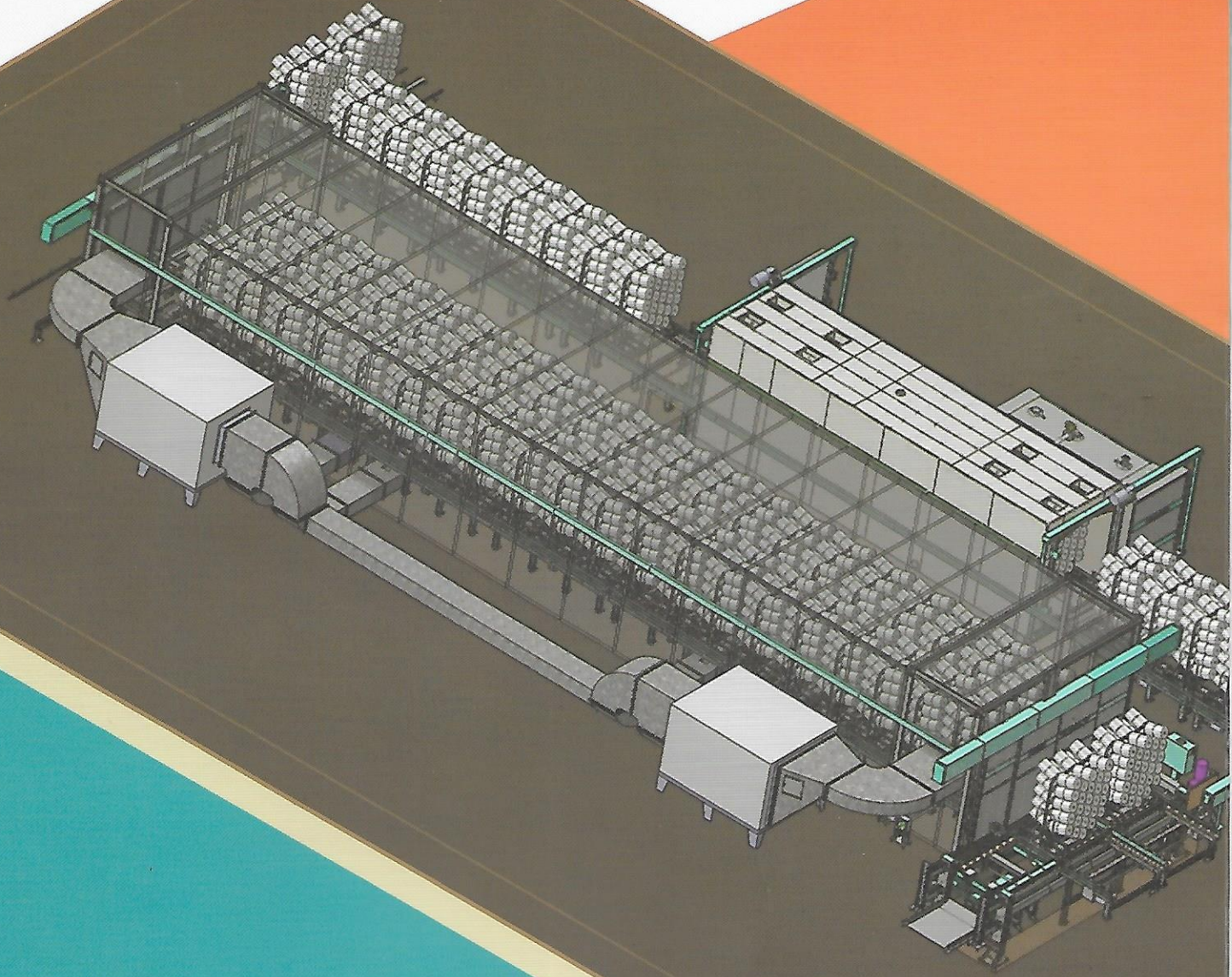




THINK SMART.  
THINK SIEGER.  
CHOOSE TO BE WITH THE PIONEER

YCP  
Autoline





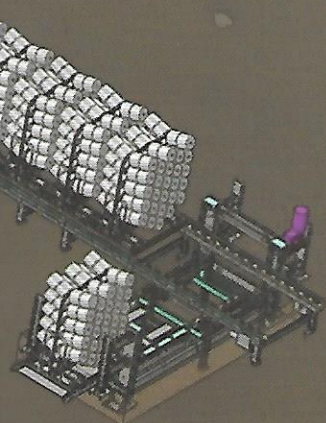
# YCP

Yarn Conditioning Plant  
Autoline



SIEGER is the pioneer in yarn conditioning technologies and has delivered state-of-the-art in yarn conditioning to the advantage of its customers globally.

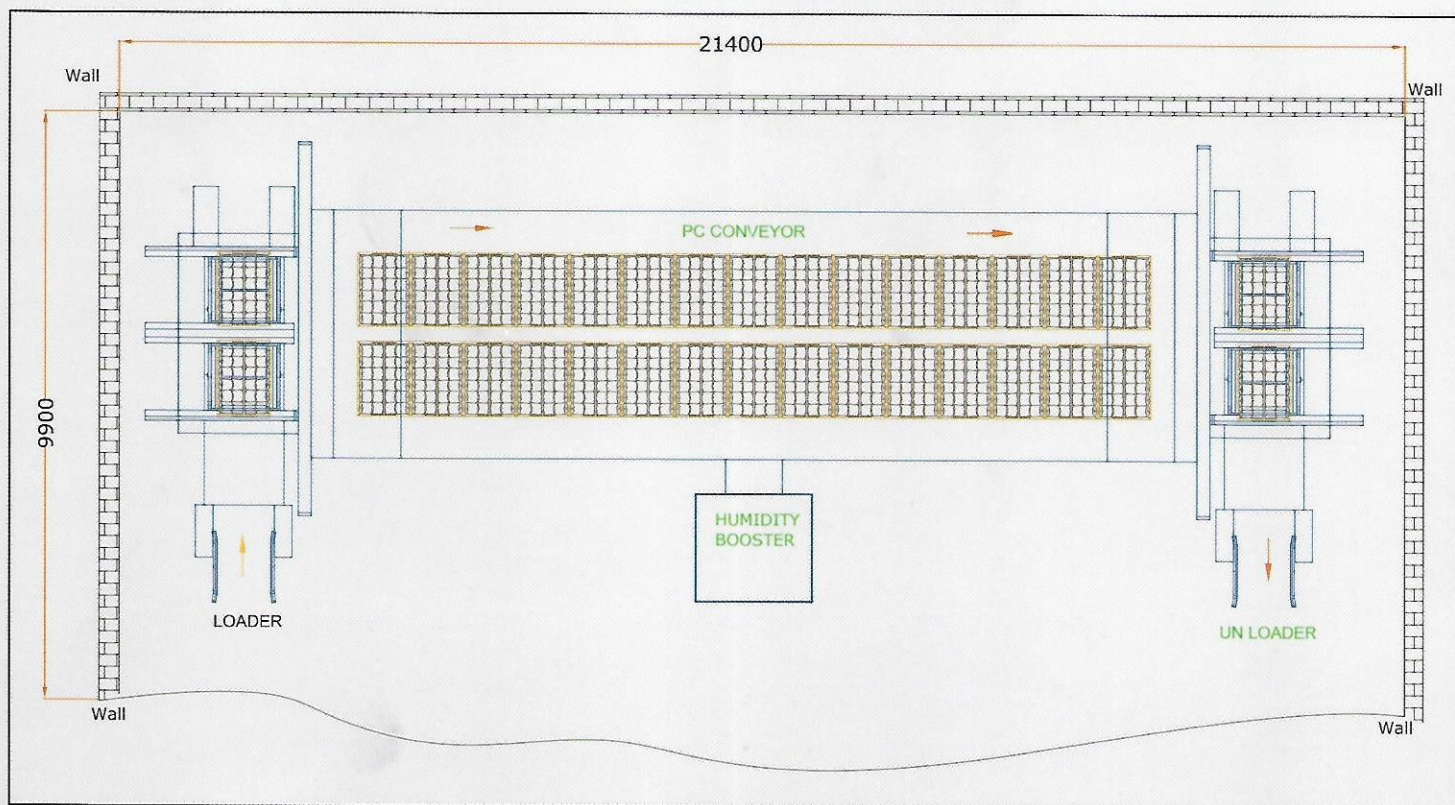
SIEGER has developed a state of the art fully automatic Autoline YCP with pre and post conditioning systems to impart right amount of moisture under controlled conditions resulting in consistent yarn quality. The SIEGER YCP AUTOLINE with pre conditioning is available in different capacities and in different layouts to suit the customer requirement.



### Product Highlights

- Unique technology from sieger for additional moisture gain
- High Moisture gain upto ~ 2.5%
- Fully automated system
- ROI within a year
- Based on FIFO principle

## PRE-CONDITIONING LINE



## YCP AUTOLINE – TECHNICAL DETAILS

### PRE-CONDITIONING ONLY

Description	750 PC	1000 PC	1500 PC	2000 PC
Capacity, kg	750	1000	1500	2000
Production, kg	16500	22000	33000	44000
Length	15535	16637	21037	25437
Width	7810	7810	7810	7810
Connected load - KW	18	20	26	37
Number of Trolleys	15	20	30	40

### YARN CONDITIONING WITH PRE-CONDITIONING

Description	750 Auto line	1000 Auto line	1500 Auto line	2000 Auto line
Capacity, kg	750	1000	1500	2000
Production, kg	16500	22000	33000	44000
Length	16170	17260	22270	27540
Width	14910	12550	12550	12550
Connected load - KW	125	158	207	275
Number of Trolleys	18	24	36	48

Marketed by  
**PIOTEX TEXTECH PVT LTD**  
 "Malhar", Plot No.11/2, Survey No.126, Walhekarwadi  
 Near Atharv Park, Chinchwad Pune - 411033.  
 Maharashtra, INDIA  
 Mobile : +91 8390115544, +91 8390116644  
 Web : www.piotex.in, Email : sales@piotex.in

## SIEGER SPINTECH EQUIPMENTS PVT. LTD.

SF No.49, Annur Road, Arasur Post, Coimbatore - 641 407, India.

Ph: +91 422 2361400 Fax: +91 422 236 1401 Mob: +91 98947 51798

email: marketing@siegerglobal.net | info@siegerglobal.net | service@siegerglobal.net